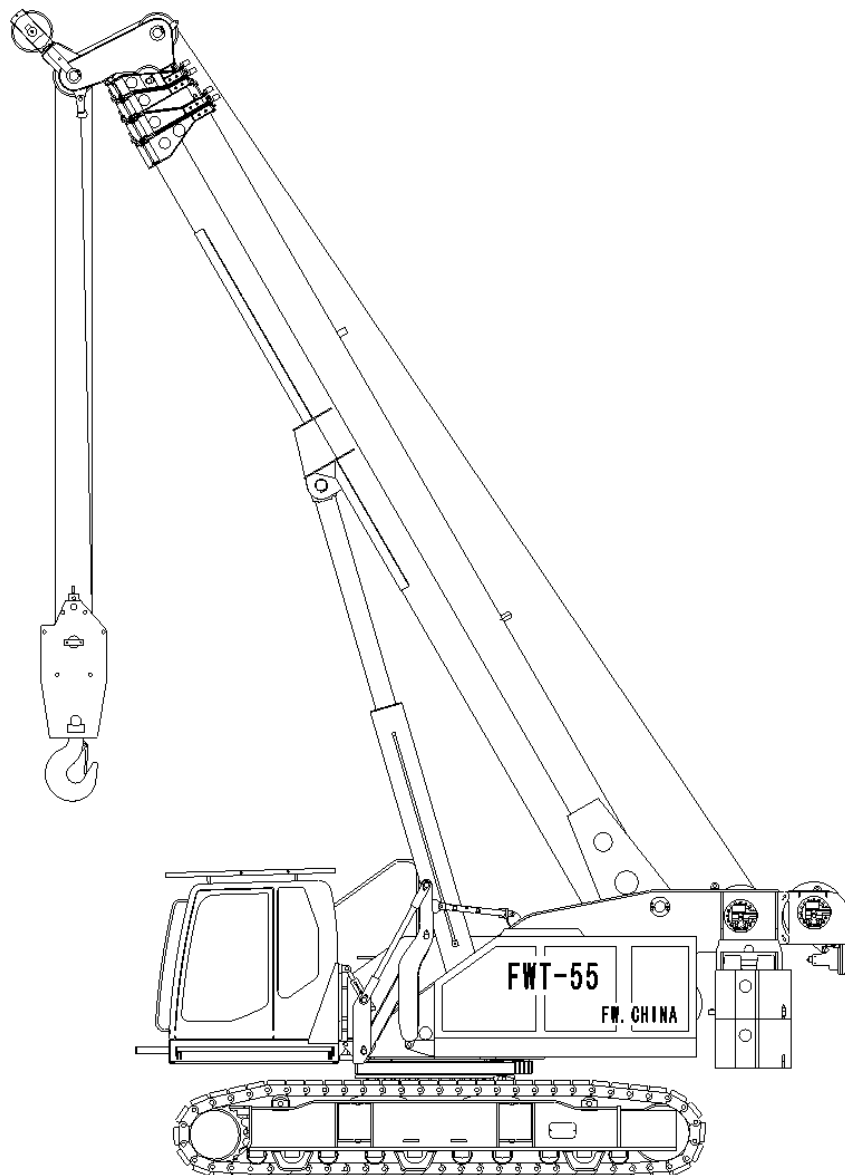


# LOGICRANE 55.38

## TELESCOPIC CRAWLER CRANE

---



---

**CRANE BUSINESS BV. / FUWA Heavy Industries Co. Ltd.**

	<b>Safety Devices</b>	<b>1</b>
	<b>Specifications</b>	<b>2—3</b>
	<b>Technical Data</b>	<b>4</b>
	<b>Overall Dimensions</b>	<b>5</b>
	<b>Load Chart (Boom)</b>	<b>6—7</b>
	<b>Working Range (Boom)</b>	<b>8</b>
	<b>Load Chart (Jib)</b>	<b>9</b>
	<b>Working Range (Jib)</b>	<b>10</b>
	<b>Notes for Load Chart</b>	<b>11</b>
	<b>Dimensions for Transportation</b>	<b>12 - 13</b>

## Safety Devices

---

<b>Moment limiter</b>	<p>The device monitors the work of the crane permanently. You can press the key to set the parameters of all working conditions.</p> <p>When the actual load is less than 90% of rated load, the indicator on the panel and the load indicator turn green at the same time.</p> <p>When the actual load is more than 95% of rated load , but less than 105% of rated load, the load indicator turns yellow.</p> <p>When the actual load is equal to or more than 105% of rated load, but less than 110% of rated load , the load indicator turns red and sounds continually.</p> <p>When the actual load is equal to or more than 110% of rated load, the load indicator turns red and sounds continually. All the motions of the crane will be cut off.</p>
<b>Boom upper limit device</b>	<p>Boom upper limit angle is controlled by the load moment limiter.</p> <p>When the boom angle is greater than the limited, the luffing motion will be cut off.</p>
<b>Hook limit device</b>	<p>Both the main and auxiliary hoisting lines are equipped with motion cut devices. On activation, the control circuit is cut, the winches stop, and both visual and audible alarms sound.</p>
<b>Slewing limit device</b>	<p>Controlled by load moment limiter. A key switch on the left control panel. The slewing motion will be cut off if the slewing angle reaches the limited.</p>
<b>Load indicator</b>	<p>Three-color load indicator fitted for the people on site to know the actual load. The loudspeaker is also fitted.</p>
<b>Brakes and locking device</b>	<p>Brakes: brakes fitted on main, auxiliary winches and slewing system</p> <p>Locking devices: pawl system fitted on main, auxiliary winches. The slewing system is along with locking ability in four positions.</p>
<b>Level gauge</b>	<p>Used for testing the angle between the machine and the ground to ensure the conditions of the ground meet the requirements.</p>
<b>Slewing alarm</b>	<p>Controlled by pressure switch. When the crane swings, the buzzer will sound intermittently to alarm the ambient people.</p>
<b>Monitoring system</b>	<p>Two cameras fitted on the main and auxiliary drums, the driver can observe the motion of the drums through the display in the cab.</p>
<b>Travel alarm</b>	<p>When the crane travels with more than 70% of rated load, the alarm buzzer will sound. But the crane can continue to travel.</p>

---

## Specifications

---

### Superstructure

---

Power device	<p>A Cummins QSB6.7, water-cooled, direct injected turbocharged diesel engine.</p> <p>Displacement : 6.7L</p> <p>Rated power : 128kw/2000rpm</p>
Hydraulic system	<p>Pumps and motors are manufactured by Rexroth, Load-sensing control, double variable displacement pump and M7 main valve. The variable displacement motors for main and auxiliary hoists can realize the infinitely variable speeds. One single hydraulic cylinder for luffing motion. The advanced design of oil circuit and the Cindy counterbalance valve fitted with load-compensation make the luffing motion smoother.</p>
Electronic monitoring system	<p>Permanently monitor the motions of main and aux. winches.</p>
Main winch and aux. winch	<p>Driven by the hydraulic motor from Rexroth through the reduction gear with wet-disc type brake made in Shandong. Wet-disc type brake.</p> <p>Drum : <math>\varnothing 442\text{mm}</math></p> <p>Rope diameter : <math>\varnothing 18\text{mm}</math></p>
Derricking device	<p>One single acting hydraulic cylinder with imported counterbalance valve.</p>
Slewing device	<p>The slewing system provides 360° rotation and the speed is 0 ~ 1.71rpm.</p>
The cabin	<p>Fully enclosed, with 1.7m of elevation and 20° tilting angle. The fitted with air-conditioning, heater, rear view mirror, windshield wipers, stereo, colorful electronic monitor, load moment limiter, adjustable driver's chair and fire extinguisher.</p>
Counterweight	<p>2 individual counterweights are fitted 15.6t, resulting in a total of 15.6t.</p>

## Undercarriage

---

Lower frame	The structural steel plate welded improves the stability of lower frame. The side
Track rollers	Each side has 10 track rollers. All track rollers are equipped with bushings and seals. They are coated with the lubricating oil.
Track shoe	116 pieces of track shoe, the width of track shoe is 800mm. Travel speed is greatly improved because track shoe is secured on chain link with bolts. The tension of track shoe can be adjusted through the hydraulic jack.
Crawler drive	Independent hydraulic propel driver is built into each crawler side frame. Each drive consists of a hydraulic motor propelling a drive sprocket through a planetary reduction gear. The whole driving device is built into the side frame with compact structure.
Travel speed	0~1,3 kmh
Gradeability	30%

## The attachment

---

**Boom** Buckling and torsion resistant design of high-tensile structure steel, oviform boom profile Length: 10.8 ~ 38m

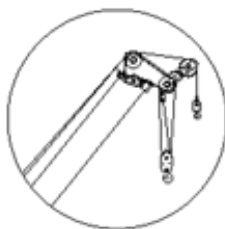
**Jib** Length: 7m , Two kinds of offset angle: 0°and 20°

### Hook blocks

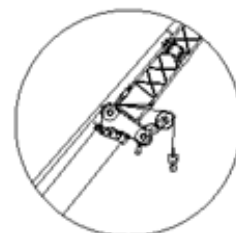
55t hook      6t ball hook

## The symbols of working conditions

Boom



Jib

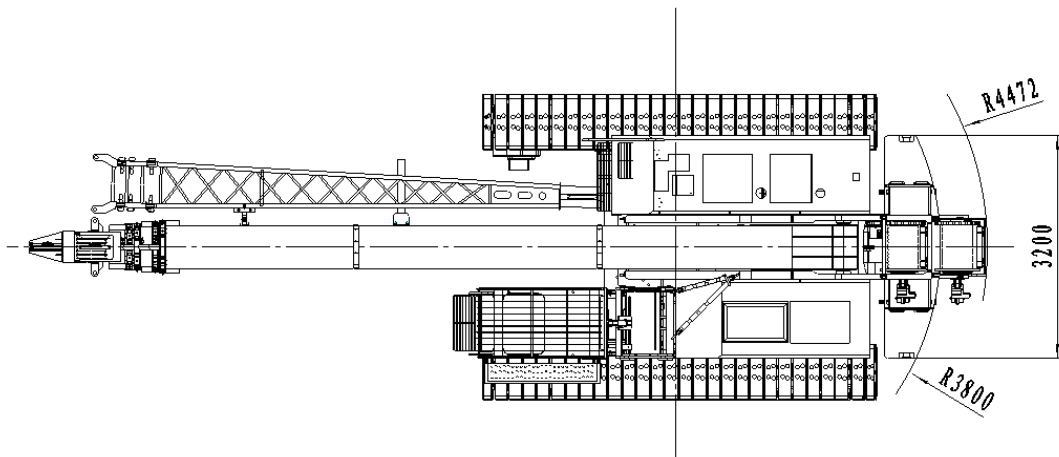
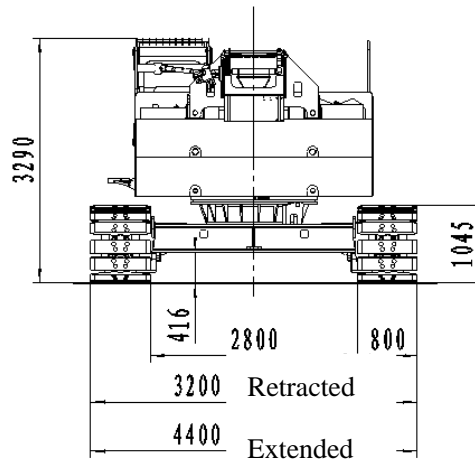
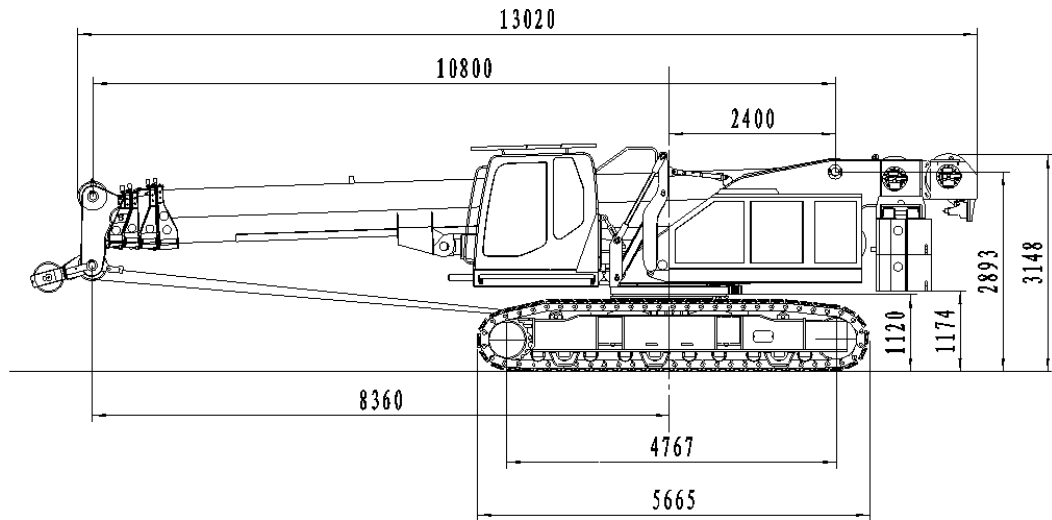


## Technical data

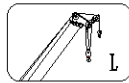
Descriptions		Unit	Data	
Max.lifting capacity		t	55	
Boom		m	10.8 ~ 38	
Jib		m	7	
Max. length of boom plus jib		m	38+7	
Boom angle		°	-2 ~ 80	
Working speed	Rope speed	Hoist	m/min	※High 120
		Lower	m/min	※120
	Swing		r/min	0-1.71
	Travel		km/h	※0-1.3
Max. parts of line	12	Single line pull	5t	
Gradeability( boom retracted, the cab in the rear )		%	30	
Engine output/rotating speed		kw/rpm	128kw/2000rpm	
Weight of whole machine		t	59.1	
Counterweight		t	15.6	
Overall dimensions		mm	13020×3200×3290	
Ground pressure		kg/cm <sup>2</sup>	0.7	

Note : Speed with ※ may vary with the load.

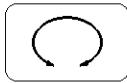
## Overall Dimensions



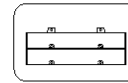
## Load Chart ( Boom )



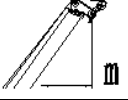
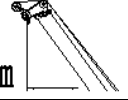
10.8m-38m



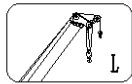
360°



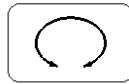
15.6t

	10.8	10.8~14.2	14.8~17.6	17.6~24.4	24.4~31.2	31.2~38	
2.5	55.0	30.0	28.0				2.5
3.0	50.0	30.0	28.0	20.0			3.0
3.2	48.0	30.0	28.0	20.0			3.2
3.5	45.0	30.0	28.0	20.0			3.5
4.0	40.0	30.0	28.0	20.0	14.5		4.0
4.5	38.0	30.0	25.5	20.0	14.5		4.5
5.0	34.0	28.6	23.6	20.0	14.5		5.0
5.5	30.0	26.6	22.0	20.0	14.5	8.5	5.5
6.0	26.4	24.4	20.5	19.4	14.5	8.5	6.0
6.5	23.2	22.0	19.2	18.6	14.2	8.5	6.5
7.0	20.0	18.6	18.0	17.5	14.0	8.5	7.0
8.0	15.5	16.2	15.7	15.1	12.4	8.5	8.0
9.0		13.4	13.0	12.8	11.1	8.2	9.0
10.0		11.3	11.0	10.8	10.0	8.0	10.0
11.0		9.7	9.4	9.3	9.1	7.3	11.0
12.0			8.1	7.9	8.2	6.6	12.0
13.0			7.0	6.8	7.2	6.0	13.0
14.0			6.1	5.9	6.3	5.5	14.0
15.0				5.1	5.6	5.1	15.0
16.0				4.4	4.8	4.7	16.0
17.0				3.8	4.3	4.3	17.0
18.0				3.2	3.8	4.0	18.0
19.0				2.8	3.3	3.6	19.0
20.0				2.3	2.8	3.3	20.0
22.0					2.1	2.7	22.0
24.0					1.4	2.1	24.0
26.0						1.7	26.0
28.0						1.4	28.0
30.0						1.2	30.0
Parts of line	N=12	N=10	N=7	N=6	N=4	N=4	Parts of line

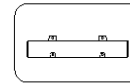
## Load Chart ( Boom )



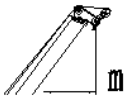
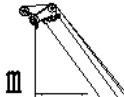
10.8m-38m



360°

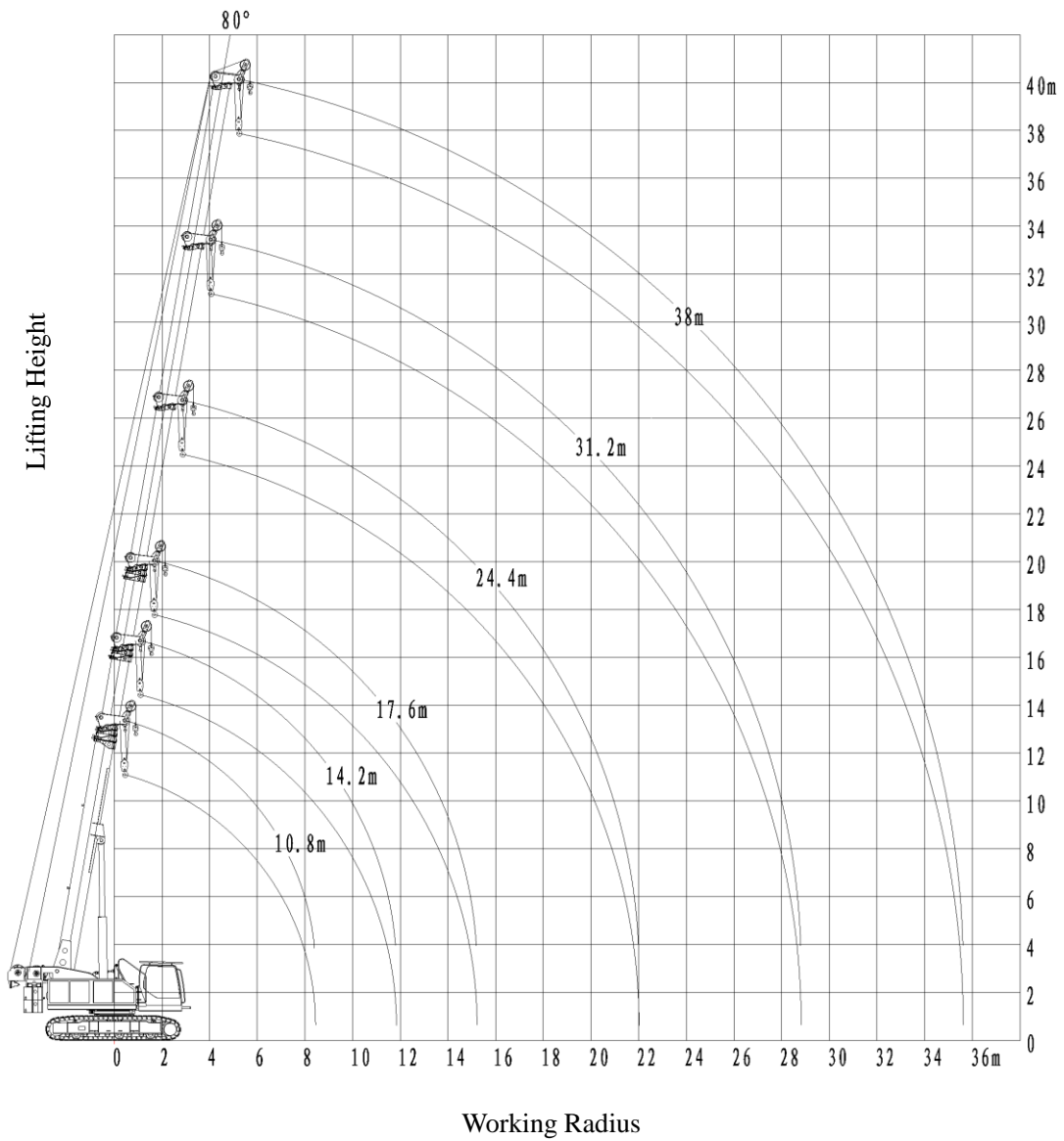


7.8t

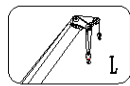
	10.8	10.8~14.2	14.8~17.6	17.6~24.4	24.4~31.2	31.2~38	
2.5	55.0	30.0	28.0				2.5
3.0	50.0	30.0	28.0	20.0			3.0
3.2	48.0	30.0	28.0	20.0			3.2
3.5	45.0	30.0	28.0	20.0			3.5
4.0	39.7	30.0	28.0	20.0	14.5		4.0
4.5	31.5	30.0	25.5	20.0	14.5		4.5
5.0	26.7	25.5	23.6	20.0	14.5		5.0
5.5	22.7	21.7	21.1	20.0	14.5	8.5	5.5
6.0	19.7	18.8	18.2	19.2	14.5	8.5	6.0
6.5	17.3	16.4	15.9	16.9	14.2	8.5	6.5
7.0	15.3	14.5	14.1	15.0	14.0	8.5	7.0
8.0	12.3	11.6	11.2	12.2	12.4	8.5	8.0
9.0		9.5	9.1	10.1	10.5	8.2	9.0
10.0		7.9	7.5	8.4	8.9	8.0	10.0
11.0		6.6	6.3	7.2	7.7	7.3	11.0
12.0			5.3	6.2	6.6	6.6	12.0
13.0			4.4	5.3	5.8	6.0	13.0
14.0			3.7	4.6	5.1	5.4	14.0
15.0				4.0	4.5	4.7	15.0
16.0				3.5	3.9	4.2	16.0
17.0				3.0	3.5	3.8	17.0
18.0				2.6	3.1	3.4	18.0
19.0				2.3	2.7	3.0	19.0
20.0				2.0	2.4	2.7	20.0
22.0					1.9	2.1	22.0
24.0					1.4	1.7	24.0
26.0						1.3	26.0
28.0						1.0	28.0
Parts of line						0.7	Parts of line
	N=12	N=10	N=7	N=6	N=4	N=4	

## Working Range ( Boom )

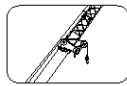
---



## Load Chart ( Jib )



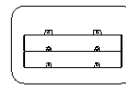
L 10.8m-38m



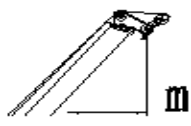
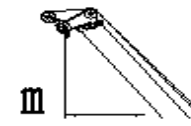
0° , 20°  
7m



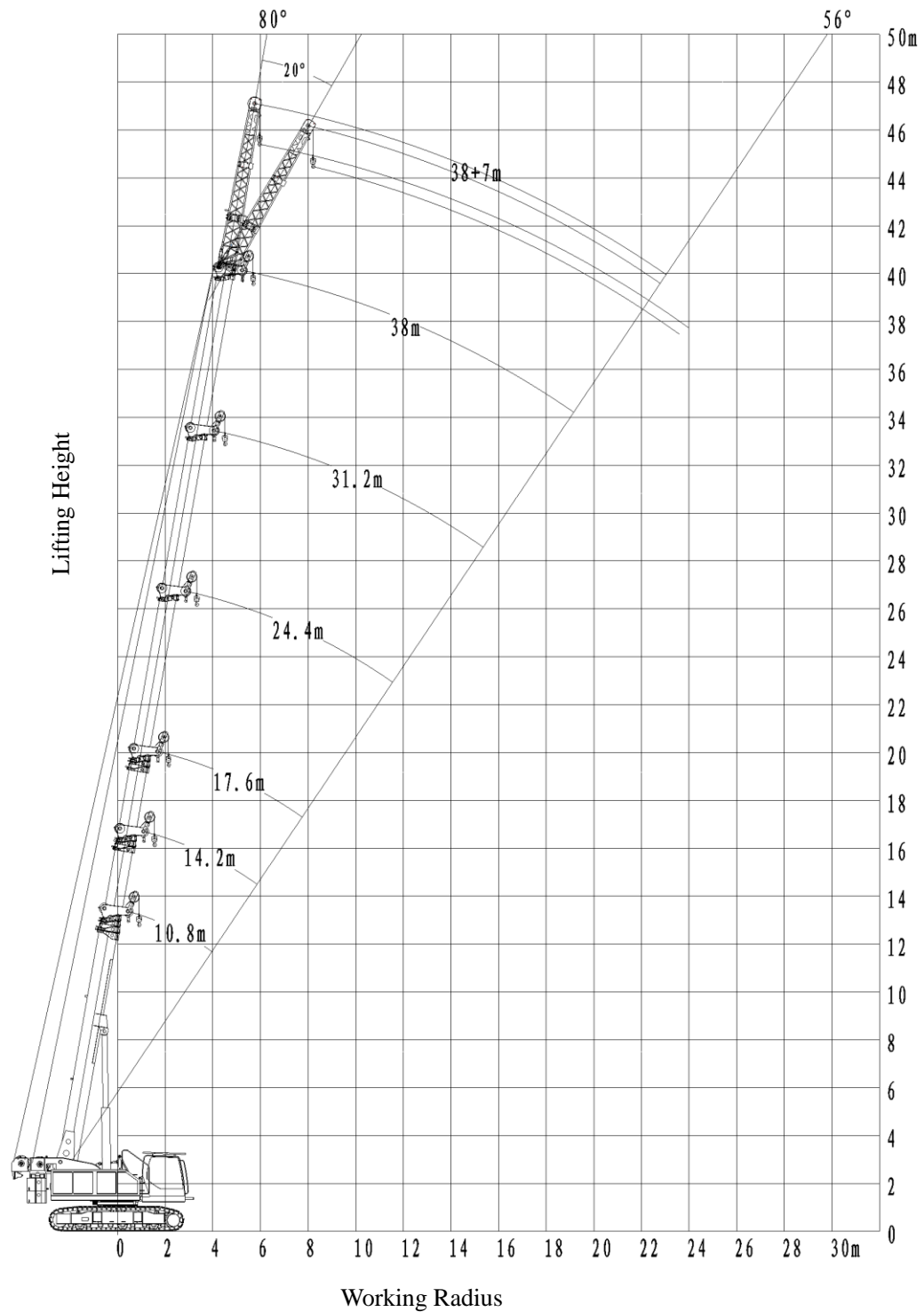
360°



15.6t

 III	0°	20°	III 
80°	3.2	2.8	80°
78°	3.2	2.8	78°
76°	2.8	2.5	76°
74°	2.5	2.1	74°
72°	2.3	1.8	72°
70°	2.1	1.6	70°
68°	1.9	1.5	68°
66°	1.7	1.4	66°
64°	1.4	1.2	64°
62°	1.2	1.0	62°
60°	1.0	0.8	60°
58°	0.8	0.6	58°
56°	0.7	0.5	56°
Parts of line	N=1	N=1	Parts of line

## Working Range ( Jib )



## Notes for load chart

---

### Notes:

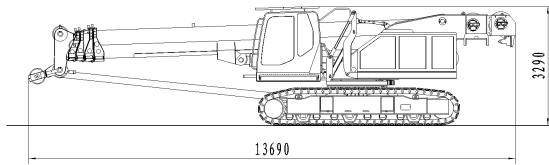
1. Ratings according to GB3811, ISO4302 and ISO4305.
2. The rated load in the table is the maximum allowed valued when the crane works on the level and firm ground and under the ideal conditions.
3. The unit in the table is ton and the rated load capacity is 75% of tipping load.
4. The rated load is calculated based on the stable load, not including impacting load, the conditions of ground and operating speed, so the driver should reduce corresponding load. Weight of hook and slings should be deducted from the rated capacity.

Weight of hook block : 55t hook block——0.762t,6t hook block——0.132t

5. The counterweight is 15.6t.
6. Max. boom hoist angle is 80°.
7. The allowed max. wind velocity for crane operation is 14m/s.
8. Stability is weak at side.

**FOR EUROPE LOGICRANE 55.38 IS IN ACCORDANCE WITH EN13.000**

## Dimensions for Transportation



主机

Basic machine

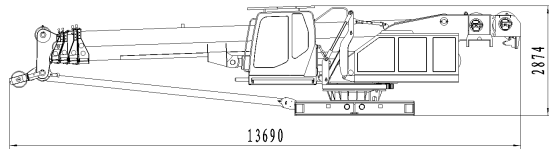
Length 13690mm

Width 3200mm

Height 3290mm

Weight 43500kg

Basic machine (without side frames)



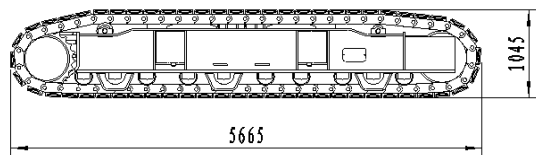
Length 13690mm

Width 3200mm

Height 2874mm

Weight 30500kg

Crawler Assembly x 2

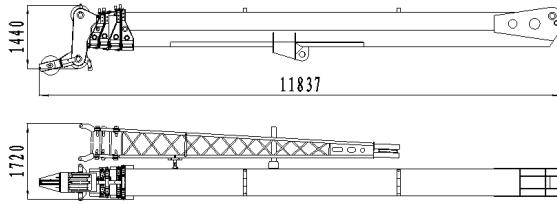


Length 5665mm

Width 800mm

Height 1045mm

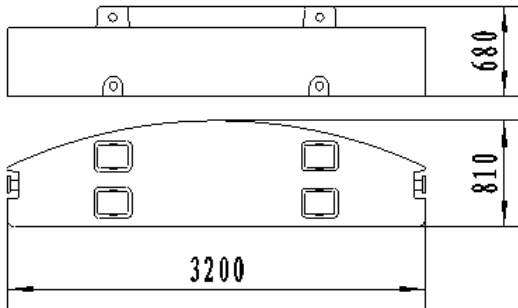
Weight 6500kg



Telescopic boom

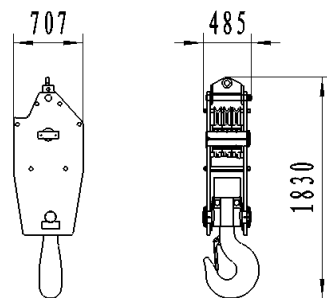
Length	11837mm
Width	1720mm
Height	1440mm
Weight	10200kg

**Dimensions for transportation**



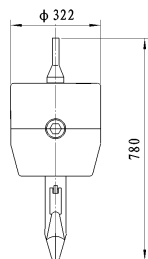
Counterweight x2

Length	3200mm
Width	810mm
Height	680mm
Weight	7800kg



55t Hook

Length	1830mm
Width	707mm
Height	485mm
Weight	762kg



6t Hook

Length	780mm
Width	322mm
Height	322mm
Weight	132kg